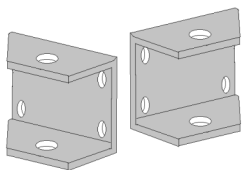
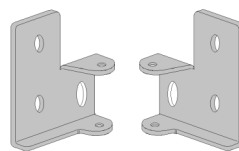


Kit Components



SM2-2
Adapter Plates



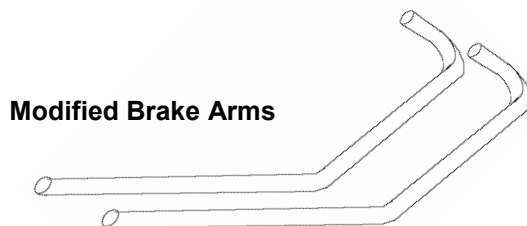
Cat 4
Adapter Brackets

HARDWARE

4 ea. 6 mm X 60 mm Bolts

4 ea. 1/4-20 X 1/2" Bolts / lock washers

8 ea. 10-24 X 5/8" Phillips machine screws / lock nuts



Modified Brake Arms

Step 1.

(Refer to Diagram A)

Using the supplied 10-24 X 5/8" Phillips machine screws, install the **SM2-2 Adapter Plates** to each of the **SM2-2 Anti-rollback Mounting Brackets**. Install with head of screws on the inside of the plates as shown so that the lock nuts will be on the same side of the mounting brackets as the springs.

Step 2.

Remove the two 6 mm X 50 mm bolts that hold the rear axle plates and rear anti-tipper brackets in place on each side of the wheelchair.

NOTE: If the bolts are installed from the outside of the frame, it will be necessary to remove the rear wheels.

The lock nuts will be reused but the bolts will not.

Retain them in the event the anti-rollback is removed.

Step 3.

(Refer to Diagram B)

Slide the **Cat 4 Adapter Brackets** and Rear Anti-tipper Brackets over the supplied 6 mm X 60 mm bolts as shown. Next, install this assembly through the axle plate and frame at the desired location. Install the original locknuts and tighten.

Step 4.

(Refer to Diagram C)

Using the 1/4-20 X 1/2" bolts and washers provided, mate the SM2-2 Mounting brackets to the Cat 4 adapter brackets as shown. Snug the bolts but do not fully tighten yet.

Step 5.

Complete Anti-rollback Device Installation

Refer to Installation Instructions beginning with Step 2 and complete installation.

NOTE:

At Step 4, substitute the supplied Modified Brake Arms. When directed to evenly tighten mounting bracket nuts, instead tighten 1/4-20 bolts to secure mounting brackets in proper position.

